

SPRING/SUMMER 2025

# DESIGN & DECOR



*Whitfield Floor Plan*  
**NATIONWIDE**  
—SERIES—



# STANDARD SPECIFICATIONS

## Homestead/Mainstreet

### STRUCTURAL

- Exterior Walls: 2"x 6" Wall Studs, 16" o.c.
- Ceiling Height: 8'
- Interior Walls: 2"x 4" Wall Studs, 16" o.c.
- Double Top Plates on Interior and Exterior Walls
- Mating Walls: 2"x 3" or 2"x 4" (Per Plans)
- Floor Joist: 2x10 @ 16" o.c.
- Floor Decking: ¾" Tongue-and-Groove OSB
- Exterior Wall Sheathing: 7/16" OSB
- Roof Pitch: 7/12, 9/12 & 12/12 Pitch @ 24" o.c. (Per Plans)
- Roof Sheathing: 7/16" OSB with Ply-Clips
- Overhangs: 12"

### EXTERIOR

- Siding: Double 5 Straight/Traditional Lap Vinyl Siding w/White Corners
- White Prefinished Fascia/Drip Edge; White Vinyl Soffit
- Roof Shingles: Architectural Over Synthetic Roof Underlayment
- Ridge Ventilation System
- Titan House Wrap
- Porches: 6" White Vinyl Post Wrap, Rails and Pickets (Per Plans)
- Windows: KINRO Single Hung Vinyl w/Screens, DP50, Low-E, 4/1 Grid Pattern
- 2" Window Blinds: OPTIONAL
- Exterior Window Treatment @ Front Elevation: 3" White Vinyl Trim  
All Shutters: OPTIONAL with 3" White Vinyl Trim (Included)
- Front Door: 3 to Choose From (See Décor Selector Guide)
- Rear/Utility Door: ½ Glass 4-Lite S262
- Sidelights: OPTIONAL
- Kwikset Smart Key Knob with Deadbolt

### PLUMBING

- Bath Fixtures: White
- Toilets: Elongated, Vitreous China
- Tubs and Showers: Fiberglass
- Glass Bypass Brushed Nickel Shower Door-48"/60" Showers (Per Plans)
- 4x6 or 4x8 Ceramic Shower @ Bath 1 (Per Plans): Includes Fiberglass Pan, Hand-Held Wand, Rainfall Shower Head and LED Light
- Pedestal Tub @ Bath 1 (Per Plans)
- Bath Faucets: Dual Handle Brushed Nickel Finish
- Bath Sink: 21" x 18" Rectangle
- Plumb for Ice Maker (Recessed Box In Wall)
- Plumbing Supply System: PEX
- Drain, Waste & Vent System: PVC
- Water Heater: Electric 50-Gallon High Efficiency
- Kitchen Sink: 8" Deep Stainless Steel, Double Bowl with Gooseneck Brushed Nickel Faucet
- Whole House Shut Off Valve
- One Exterior Hose Bib

### INSULATION & HEATING/COOLING

- Floor Insulation: OPTIONAL
- Exterior Walls: R-19 Insulation
- Ceiling: R-38 Insulation (R-30 Between Knee Walls and Under Floor Decking of Capes and Triple Wide Models)
- Return Air Grille with Plenum & Pull Wire for Thermostat
- Floor Registers: OPTIONAL

### INTERIOR FINISH

- Walls: 1/2" Drywall Primed, Smooth Finish, Painted Gray
- Ceilings: 1/2" High Strength Drywall, Smooth Finish, Painted White
- Base Molding: 3 ¼" Speed/Finished Coat (Pine)
- Door & Window Casing: 2 ¼" Colonial/Primed & Finished (Pine)
- 4-1/4" Crown Mold T/O (Except Closets) (Pine)
- Stairs: Carpet Grade w/Pine Treads-Sloped Wall w/Cap, Prefinished Handrail, White Skirt Boards-Pickets-Newel Posts (Per Plans)
- Carpet: 25 oz FHA with Deluxe 6# Padding (Shipped Loose) For Bedrooms, Bedroom Closets and Den
- Resolve Vinyl Plank Flooring (LVP): Baths and Utility
- Resolve Vinyl Plank Flooring (LVP): Living Room, Dining Room, Kitchen, Hall and Foyer (Shipped Loose)
- Interior Doors: Two Panel Hardboard
- Lever Brushed Nickel Interior Locksets
- Cabinets: DuraBuilt Hardwood Shaker, 36" Wall with Crown, Soft-Close Doors & Drawers, Brushed Nickel Knobs & Matching Toe Kicks, Lazy Susan, Pot & Pan Drawer
- Countertops: Laminate with Crescent Edge T/O
- Backsplash: Kitchen—Ceramic (See Décor Selector Guide for Standards)
- Backsplash: Baths-4" Matching Laminate (Ceramic Optional)
- Vanity Mirrors: White Framed
- Shower Rods and Bath Accessories by Purchaser
- Closet Shelving: Ventilated Epoxy Coated - Shelving Layout per Plans, Shoe Cubby in BR1 Closet, Storage/Shelving over Washer/Dryer
- Bench/Cubby in Utility Room or Foyer – If shown on Plans

### ELECTRICAL

- Main Electric Panel: 200 AMP
- Smoke Detectors: Per Plan
- Interior Lighting: BN Fixtures, Wired, Braced & Prepped for Ceiling Fan In Living Room & Bedrooms with 2 Switches (Overhead Light Included)
- 2 Pendant Lights over Island or Peninsula Bar (Per Plans)
- LED Recessed Lights: Kitchen, Living Room & Over Shower in Bath #1
- Wall Mounted Vanity Lighting
- Electrical Gage Boxes: Nailed to Stud T/O, Sealed on Exterior Walls
- Exhaust Fans: Vented To Exterior
- General Wiring: Nonmetallic, 12 Gauge General Lighting Minimum
- ARC Fault Breakers Included
- 100 CFM Exhaust Fan @ Bath 1
- Interior Receptacle w/Night Light @ Hallways Greater Than 6' Long
- Two Exterior Receptacles

### APPLIANCES – STAINLESS STEEL

- Dishwasher
- Ventless Designer Canopy Range Hood (2 to Choose From)
- Includes Dryer Vent Box Recessed in Wall
- Dryer Ducted by Purchaser
- All Other Appliances: OPTIONAL

### CONSTRUCTION ZONE DESIGN

- 20# Roof Load
- 90 MPH Construction/115 Vult
- Engineering/Submittal Fees (Up to \$715)
- Stamped Prints for Permitting
- Pro-Set Included
- 2/10 Warranty
- NTA Labels



# TABLE OF CONTENTS

A DESIGN GUIDE FOR YOUR HOME

NATIONWIDE  
SERIES

## KITCHEN

CABINETS & PULLS • BACKSPLASH • COUNTERTOPS • RANGE HOODS • APPLIANCES & SINKS

## BATHROOM & LAUNDRY

SINKS & UTILITY • WALK-IN SHOWERS • BATHTUBS & STALLS • ACCESSORIES

## LIGHTING & FIXTURES

LIGHTING • HARDWARE • PLUMBING FIXTURES

## FLOORING

CARPET • LUXURY VINYL • LAMINATE

## EXTERIORS

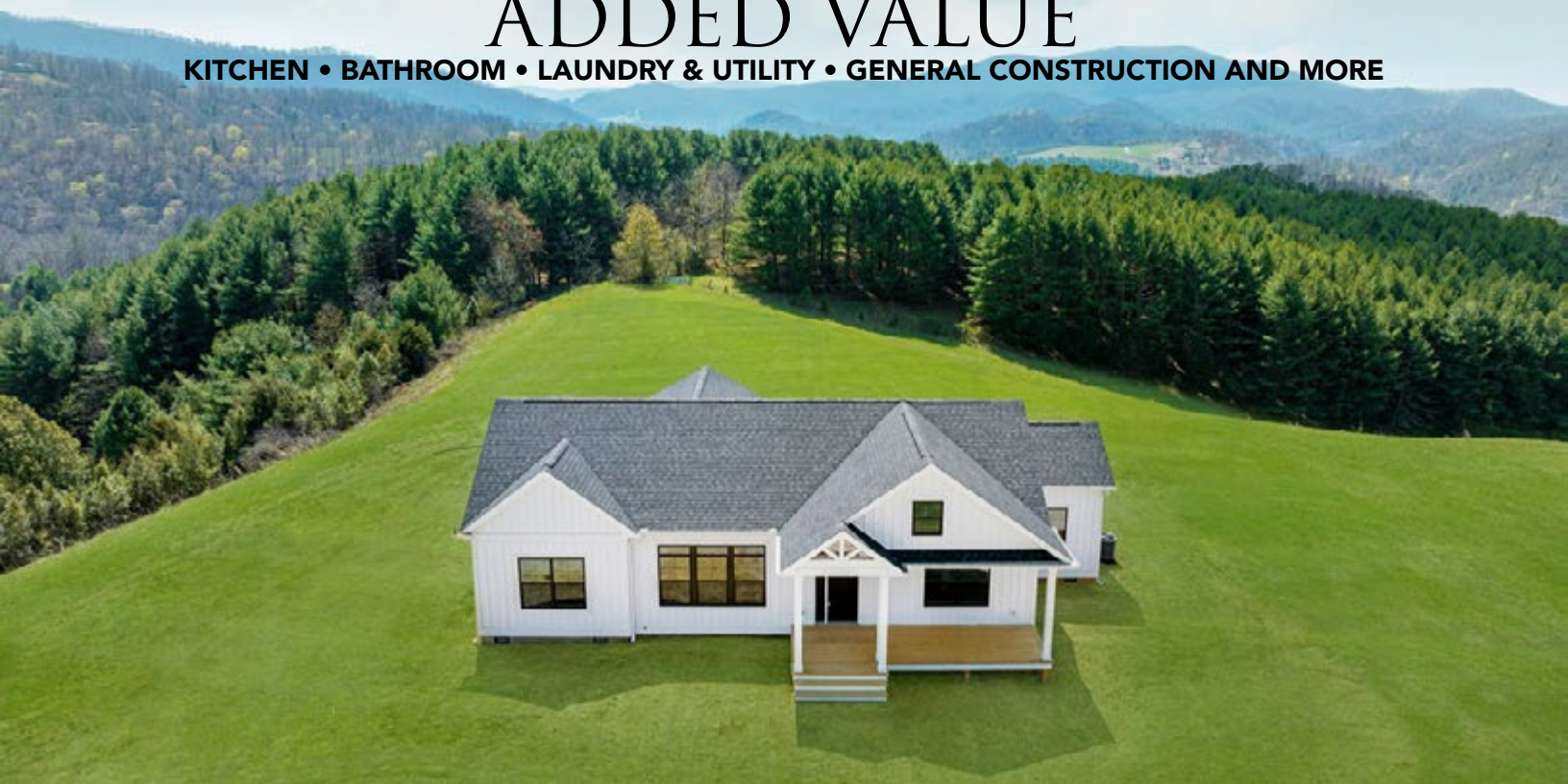
VINYL SIDING • ROOFING • SHUTTERS • DECKING • DORMERS • DOORS • WINDOWS

## INTERIORS

FIREPLACES • ACCENT WALLS • FARMHOUSE • PANTRY & CLOSET • NICHES • MILLWORK

## ADDED VALUE

KITCHEN • BATHROOM • LAUNDRY & UTILITY • GENERAL CONSTRUCTION AND MORE



SPRING/SUMMER 2025

# KITCHEN

*Southampton Floor Plan*



NATIONWIDE  
SERIES



# CABINETS & PULLS

## CUSTOM CABINETRY & HARDWARE

NATIONWIDE  
SERIES

## STANDARD FINISHES



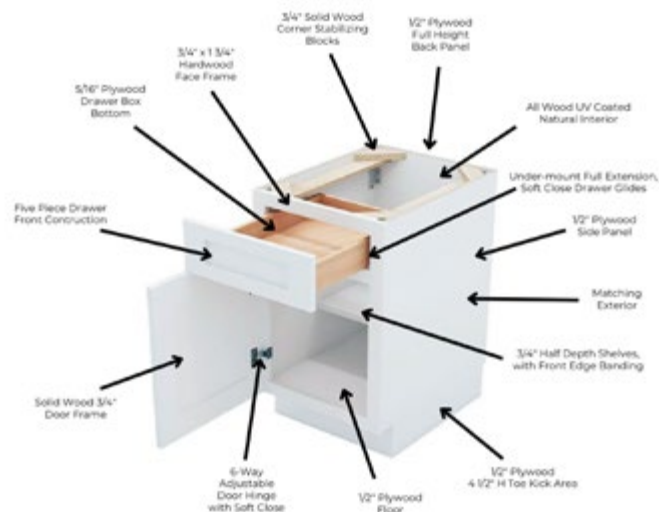
ASH WALNUT



NATURAL



TRUE WHITE



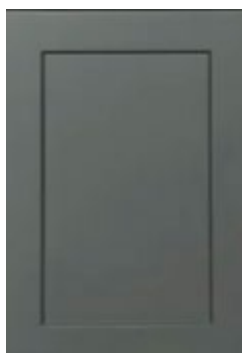
## OPTIONAL FINISHES



ESPRESSO



DOVE GREY



SLATE GREY



SAGE GREEN



NEW BLUE



BLACK

## PULLS & KNOBS



[ ] GOLD PULL  
OPTIONAL



[ ] GOLD KNOB  
OPTIONAL



[ ] BLACK PULL  
OPTIONAL



[ ] BLACK KNOB  
OPTIONAL



[ ] NICKEL PULL  
OPTIONAL



[ ] NICKEL KNOB  
OPTIONAL

### WHICH CABINETS HAVE YOU SELECTED?

Kitchen Base: \_\_\_\_\_

Bath One: \_\_\_\_\_

Kitchen Wall: \_\_\_\_\_

Bath Two: \_\_\_\_\_

Island: \_\_\_\_\_

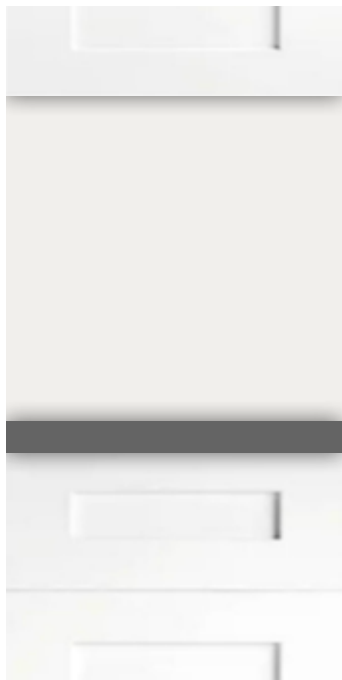
Bath Three: \_\_\_\_\_

Laundry: \_\_\_\_\_

Other: \_\_\_\_\_



☐ **NONE**  
Omit



☐ **STANDARD**  
4-6" Total Height



☐ **OPTIONAL**  
Full Height



## STANDARD HEIGHT TILE (4 - 6" Total Height)



☐ **MATCHING LAMINATE** 4"



☐ **DENIM** 6" Stack



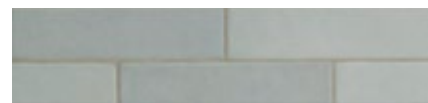
☐ **DOVE** 6" Stack



☐ **CALCUTTA** 4" Row



☐ **JADE** 6" Stack



☐ **SKY** 6" Stack



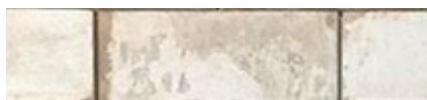
☐ **FOSSIL** 4" Row



☐ **STERLING** 6" Stack



☐ **STORM** 3x12" Stack



☐ **SUGAR CANE**  
Grout-less 4" Row



☐ **DESERT GREY** 6" Stack



☐ **ARCTIC WHITE** 6" Stack

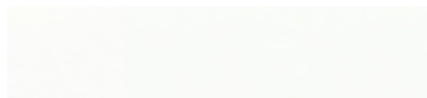


☐ **BLANC** 6" Row



☐ **GRIS** 6" Row

## OPTIONAL FULL HEIGHT TILE



[ ] **BLANC** 6x18" Tile



[ ] **GRIS** 6x18" Tile



[ ] **DENIM** 3x12" Tile



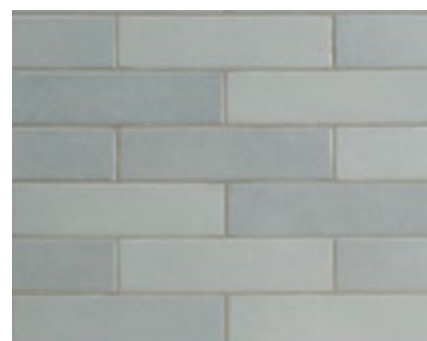
[ ] **DOVE** 3x12" Tile



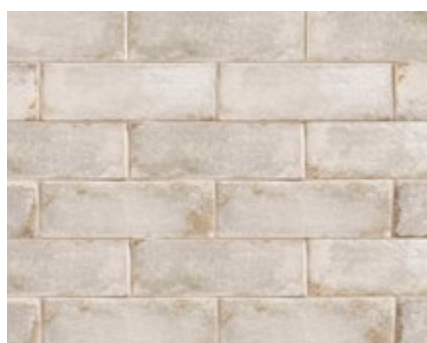
[ ] **CALCUTTA** 4x12" Tile



[ ] **JADE** 3x12" Tile



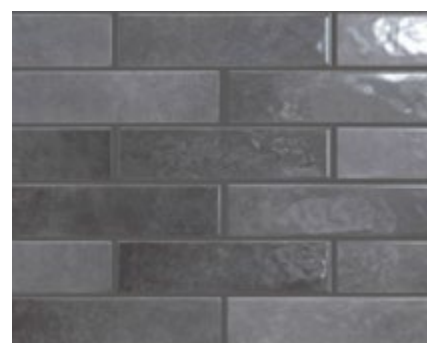
[ ] **SKY** 3x12" Tile



[ ] **FOSSIL** 4x9" Tile



[ ] **STERLING** 3x12" Tile



[ ] **STORM** 3x12" Tile



[ ] **SUGAR CANE**  
Grout-less 4x8" Tile



[ ] **DESERT GREY**  
Subway 3x6" Tile



[ ] **ARCTIC WHITE**  
Subway 3x6" Tile

## STANDARD LAMINATE COUNTERTOP



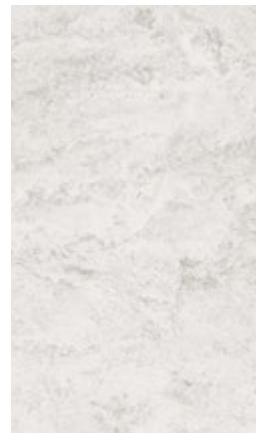
[ ]  
**ALUMA MARBLE**



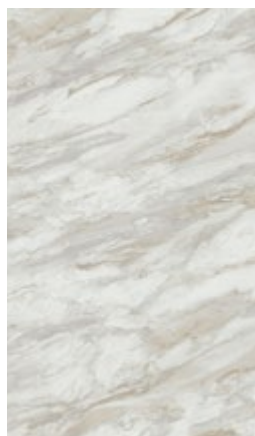
[ ]  
**BELLO ROMANO**



[ ]  
**BRAZILIAN BLUE**



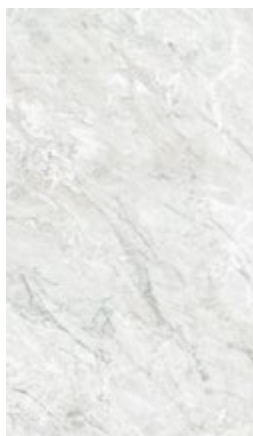
[ ]  
**CRYSTAL QUARTZITE**



[ ]  
**DRAMA MARBLE**



[ ]  
**GLACIER QUARTZITE**



[ ]  
**ICE MIST**



[ ]  
**LAKESHORE**



[ ]  
**MARMO BIANCO**



[ ]  
**PORTORO**



[ ]  
**TERRENA SOAPSTONE**



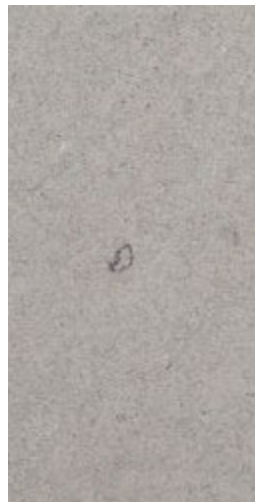
**LAMINATE CRESCENT EDGE  
STANDARD**



## OPTIONAL QUARTZ WITH EASED EDGE



[ ]  
CARRARA MIST



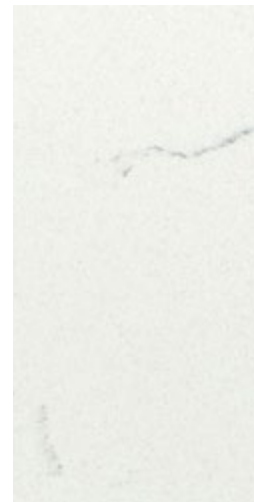
[ ]  
FOSSIL GRAY



[ ]  
SIMPLY WHITE



[ ]  
SPARKLING WHITE

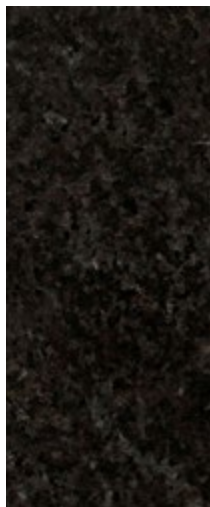


[ ]  
WILLOW WHITE

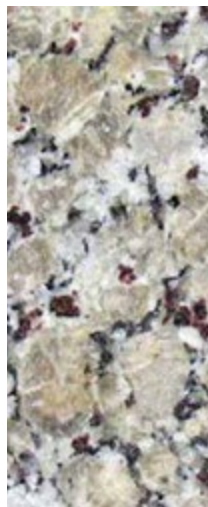
## OPTIONAL GRANITE WITH EASED EDGE



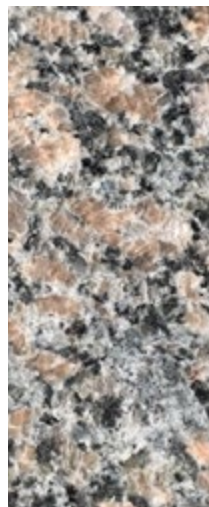
[ ]  
AZUL PLATINO



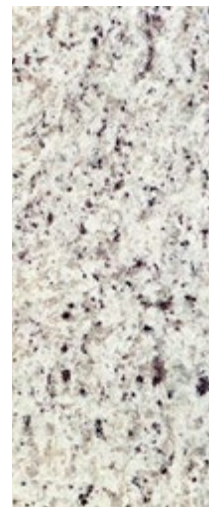
[ ]  
BLACK PEARL



[ ]  
BUTTERFLY BEIGE



[ ]  
CALEDONIA



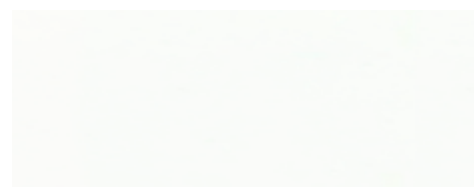
[ ]  
DALLAS WHITE



[ ]  
LUNA PEARL



QUARTZ AND GRANITE EASED EDGE



[ ] ARCTIC WHITE by LG Hi-MACS  
Baths Only



[ ] **30" STAINLESS**  
CANOPY HOOD - STANDARD



[ ] **36" GLASS & STAINLESS**  
CANOPY HOOD - STANDARD



[ ] **36" GLASS & BLACK**  
CANOPY HOOD - OPTIONAL



[ ] **36" BEAM & SHIPLAP**  
NATIONWIDE DURABUILT HOOD - OPTIONAL  
*Black Range Hood with Brown Stain Contrast Shown\**

**RANGE HOOD COLOR:**

Available in all cabinet colors\*

**BOTTOM TRIM COLOR:**

Available in all cabinet and ceiling beam colors\*

36" BEAM & SHIPLAP RANGE HOOD IN NEW BLUE WITH MATCHING TRIM SHOWN\*

# APPLIANCES & SINKS

WHIRLPOOL APPLIANCE PACKAGE

NATIONWIDE  
SERIES

Whirlpool

## APPLIANCES (Available in Black or Stainless Steel)



BLACK PACKAGE AVAILABLE



OVER-THE-RANGE  
MICROWAVE

☐ BLACK  
☐ STAINLESS STEEL



☐ ELECTRIC RANGE

☐ BLACK  
☐ STAINLESS STEEL



☐ GAS RANGE

☐ BLACK  
☐ STAINLESS STEEL



☐ SIDE-BY-SIDE

☐ BLACK  
☐ STAINLESS STEEL



☐ FRENCH DOOR

☐ BLACK  
☐ STAINLESS STEEL



DISHWASHER

☐ BLACK  
☐ STAINLESS STEEL

## KITCHEN SINKS



☐ DROP-IN TOPMOUNT  
LAMINATE STANDARD



☐ UNDERMOUNT 50/50  
GRANITE/QUARTZ OPTION



☐ UNDERMOUNT 60/40  
GRANITE/QUARTZ OPTION



☐ UNDERMOUNT SINGLE  
GRANITE/QUARTZ OPTION



TOPMOUNT



UNDERMOUNT

Available Top-Mount w/Laminate or  
Undermount w/Granite-Quartz

☐ 33x22" STAINLESS STEEL SINGLE BOWL FARMHOUSE SINK

☐ TOPMOUNT ☐ UNDERMOUNT (Both include Colander, Cutting Board, and Bottom Grid Accessories)

☐ 33x22" PVD COATED GUNMETAL 50/50 DOUBLE BOWL FARMHOUSE SINK

☐ TOPMOUNT ☐ UNDERMOUNT (Both include Colander, Cutting Board, and Bottom Grid Accessories)

PICTURES ARE FOR REPRESENTATION ONLY – REFER TO SAMPLES FOR ACTUAL COLORS



SPRING/SUMMER 2025

# BATHROOM & LAUNDRY



*Sparta Cape Alternate Floor Plan*

**NATIONWIDE**  
SERIES

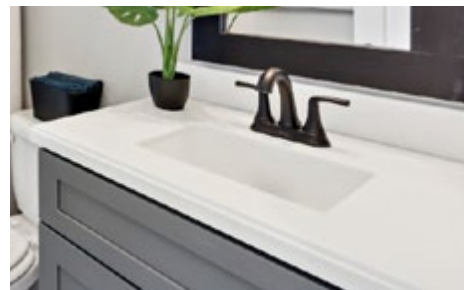
## BATHROOM SINKS



[ ] **DROP-IN VITREOUS CHINA**  
STANDARD  
FOR LAMINATE COUNTERTOPS



[ ] **UNDERMOUNT PORCELAIN**  
OPTIONAL  
FOR GRANITE & QUARTZ



[ ] **INTEGRATED SOLID SURFACE**  
OPTIONAL  
ONLY AVAILABLE IN ARCTIC WHITE

## UTILITY ROOM FEATURES



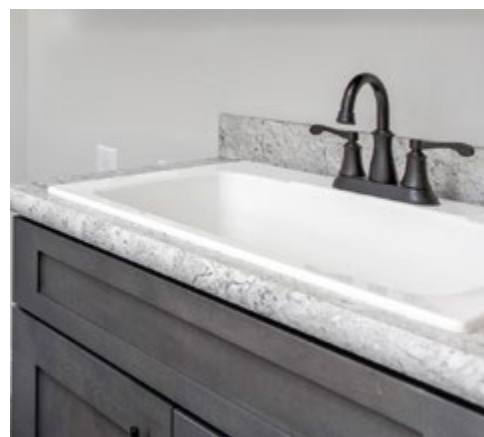
[ ] **OPTIONAL PET SHOWER  
WITH HAND WAND**



**STANDARD CUBBY**  
SHOWN ON STANDARD FLOOR PLAN

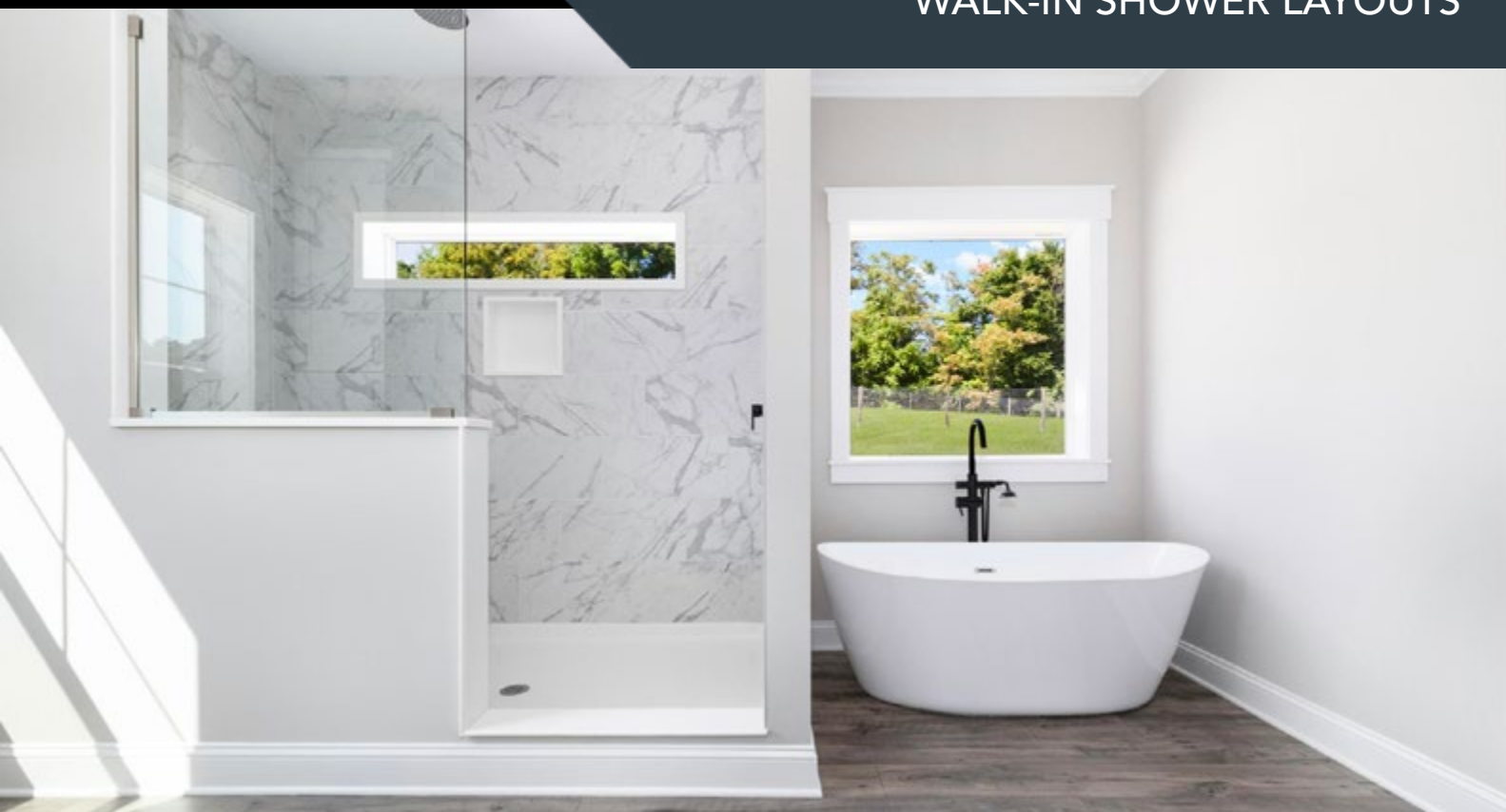


**ABOVE WASHER/DRYER STORAGE**  
STANDARD (When Applicable)\*

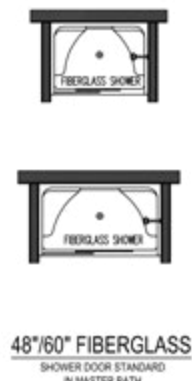
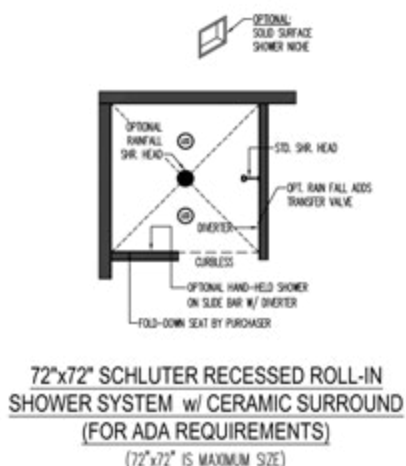
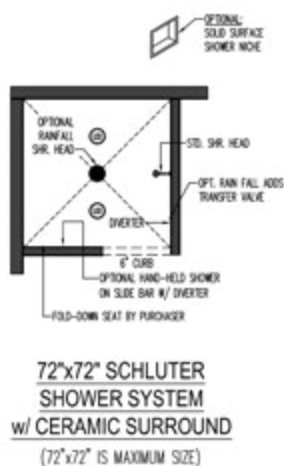
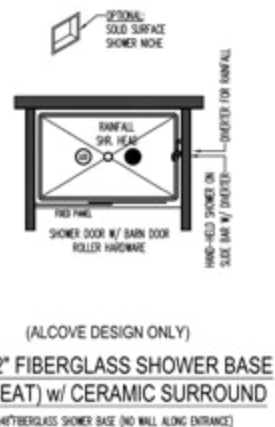
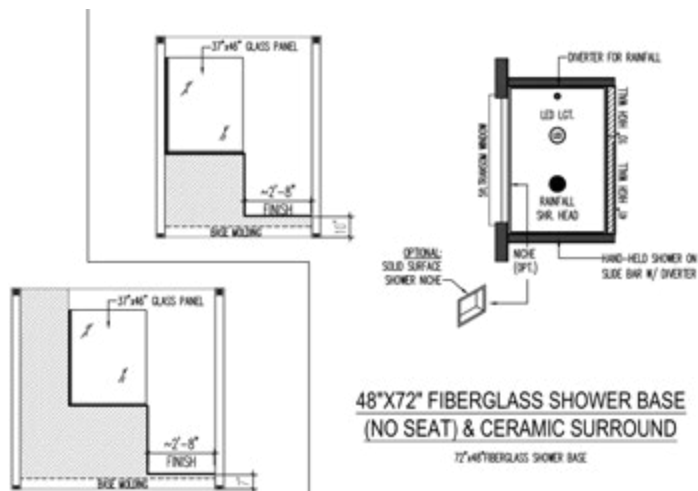


[ ] **OPTIONAL DEEP DROP-IN  
ACRYLIC UTILITY SINK**





**OPTIONAL 4x8' LUXURY SHOWER WITH BENCH (CALCUTTA EMPIRE TILE) + OPTIONAL FREE-STANDING TUB SHOWN**





# WALK-IN SHOWERS

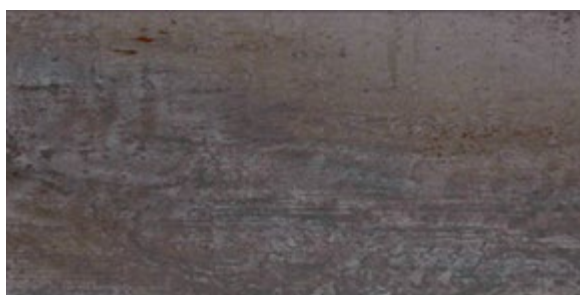
## CERAMIC TILE

NATIONWIDE  
SERIES

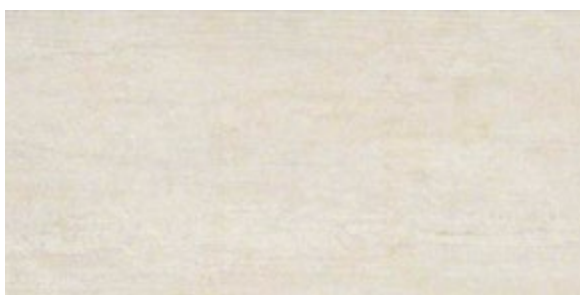
### STANDARD



[ ] **CALCUTTA EMPIRE** 12x24" Tile



[ ] **OXIDE IRON** 12x24" Tile

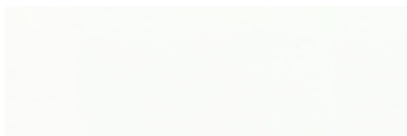


[ ] **METROPOLIS AVIORO** 12x24" Tile



[ ] **OXIDE MAGNETITE** 12x24" Tile

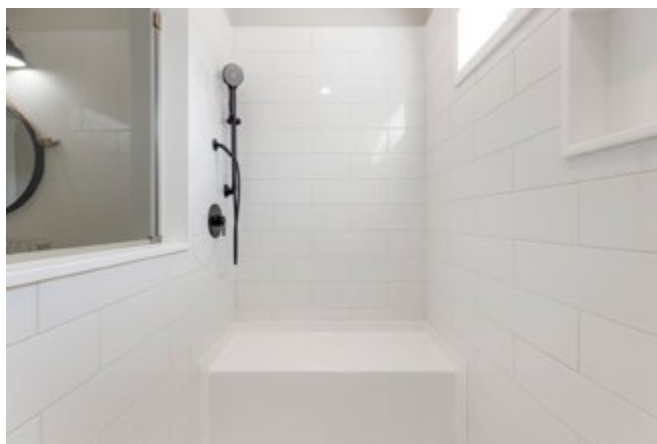
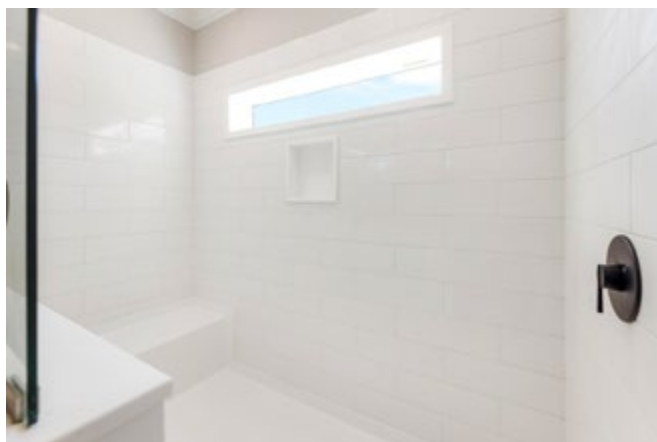
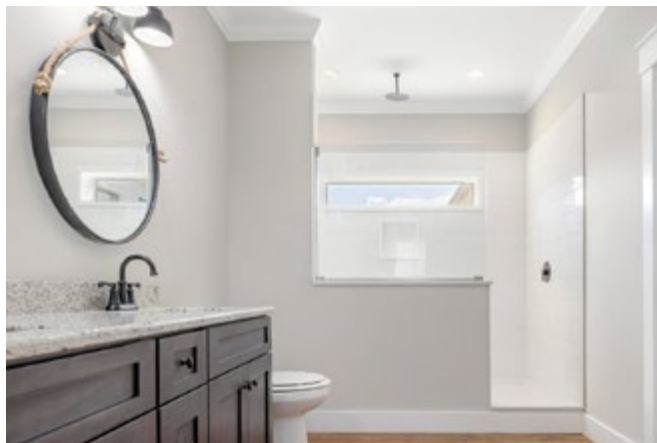
### OPTIONAL



[ ] **BLANC** 6x18" Tile



[ ] **GRIS** 6x18" Tile



**OPTIONAL 4x8' LUXURY SHOWER WITH BENCH**  
SHOWN WITH OPTIONAL BLANC TILE

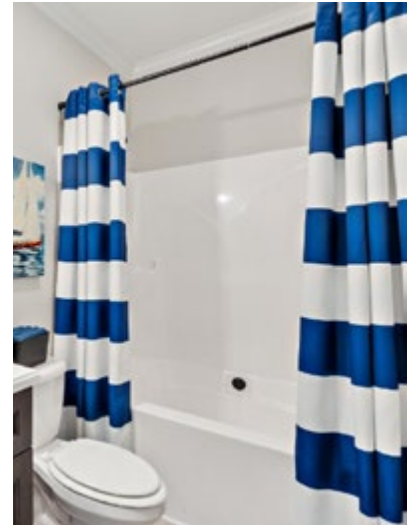
## SHOWER & BATHTUB STALLS



[ ] STANDARD TUB/SHOWER COMBINATION



[ ] OPTIONAL 60" SHOWER WITH INTEGRATED BENCH



[ ] OPTIONAL GARDEN TUB/SHOWER COMBINATION

## FREE-STANDING BATHTUBS



[ ] OPTIONAL FREE-STANDING BATHTUB  
WHITE



[ ] OPTIONAL FREE-STANDING BATHTUB  
BLACK

# ACCESSORIES

BENCHES, MIRRORS, AND MORE.

NATIONWIDE  
SERIES

## STANDARD ACCESSORIES



**SOLID PINE WOOD FRAME MIRROR**

☐ CHARCOAL    ☐ WHITE  
☐ BROWN STAIN    ☐ NATURAL STAIN



**ELONGATED TOILET**



**BATHROOM LINEN CLOSET**

INCLUDED IF SHOWN ON  
STANDARD FLOOR PLAN

## OPTIONAL ACCESSORIES

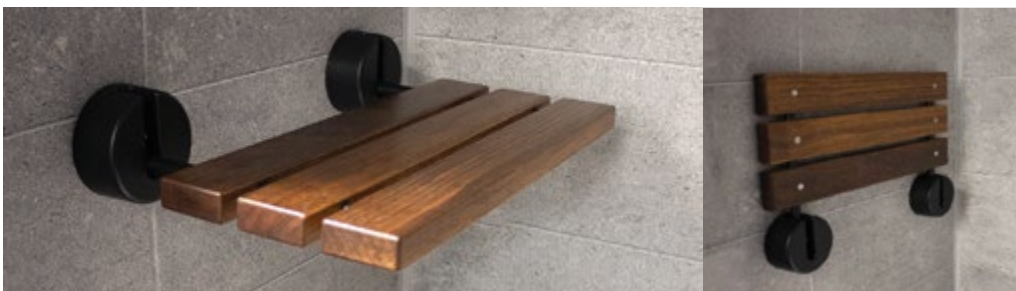


☐ **SHOWER BARN DOOR**

☐ BLACK    ☐ NICKEL



☐ **ADA BATHROOM VANITY**



☐ **OPTIONAL FOLDABLE TEAK WOOD SHOWER SEAT**

DIMENSIONS: 4" H x 20" W x 13.5" D    WEIGHT LIMIT: 300 Pounds

PICTURES ARE FOR REPRESENTATION ONLY – REFER TO SAMPLES FOR ACTUAL COLORS



SPRING/SUMMER 2025

# LIGHTING & FIXTURES



*Sparta Cape Alternate Floor Plan*

**NATIONWIDE**  
SERIES

# LIGHTING INSPIRATION

INTERIOR DESIGNER SELECTED LIGHTING

NATIONWIDE  
SERIES

PROGRESS  
LIGHTING™

## OPTIONAL INDIVIDUAL LIGHTING



[ ] URBAN FARMHOUSE  
CHANDELIER



[ ] SEDONA CHANDELIER



[ ] 8" FARMHOUSE WHITE  
METAL SCONCE  
EXTERIOR OR INTERIOR



[ ] 12" FARMHOUSE  
WHITE METAL PENDANT



[ ] EXTERIOR  
CANDELABRA LANTERN



RECTOR WALL SCONCE  
[ ] GUN METAL [ ] BLACK



[ ] EXTERIOR  
PEWTER LANTERN

PICTURES ARE FOR REPRESENTATION ONLY – REFER TO SAMPLES FOR ACTUAL COLORS

**[ ] STANDARD BRUSHED NICKEL PACKAGE**



Dining Room Chandelier



Pendant  
w/8" Seeded Glass



2-Light Flush  
Bedroom



6" Recessed LED



2-Light Bath Vanity  
w/Seeded Glass



Interior Door  
Lever Set



Square  
Cabinet Knob



Bar Pull



STD - Exterior  
Black Hex Lantern



# PLUMBING FIXTURES

## STANDARD NICKEL PACKAGE

NATIONWIDE  
SERIES

### [ ] STANDARD BRUSHED NICKEL PACKAGE



### [ ] OPTIONAL PFISTER FIXTURES

(Substitution available in any fixture package)

Pfister  
FAUCETS



[ ] NICKEL PULL  
DOWN FAUCET

[ ] BLACK PULL  
DOWN FAUCET

[ ] NICKEL BATH  
FAUCET

[ ] BLACK BATH  
FAUCET

[ ] NICKEL BATH  
FIXTURES

[ ] BLACK BATH  
FIXTURES

PICTURES ARE FOR REPRESENTATION ONLY – REFER TO SAMPLES FOR ACTUAL COLORS

## [ ] OPTIONAL BLACK PACKAGE



Dining Room  
Chandelier



Black Cord Pendant  
w/8" Seeded Glass



6" Recessed LED



2-Light Flush LR/BR



2-Light Bath Vanity  
w/Seeded Glass



Square  
Cabinet Knob



Bar Pull



Door Knob Set  
(Black Door Hardware Incl.)



Kitchen  
Pulldown



Bath  
Lavatory



Bath  
Tub/Shower



Bath  
Shower



Bath  
Pedestal Tub Filler  
Floor Mount



Bath  
Hand-Held Shower Kit  
Incl. w/4x6 & 4x8 Showers

# LIGHTING & FIXTURES

OPTIONAL FARMHOUSE PACKAGE

NATIONWIDE  
SERIES

## [ ] OPTIONAL FARMHOUSE PACKAGE



Chariot Chandelier



Cage Pendant



6" Recessed LED



2-Light Flush LR/BR



Blast 2-Light  
Vanity



Square  
Cabinet Knob



Bar Pull



Door Knob Set  
(Black Door Hardware Incl.)



Kitchen  
Pulldown



Bath  
Lavatory



Bath  
Tub/Shower



Bath  
Shower



Bath  
Pedestal Tub Filler  
Floor Mount



Bath  
Hand-Held Shower Kit  
Incl. w/4x6 & 4x8 Showers



NATIONWIDE  
SERIES  
*Tidewater Floor Plan*



SPRING/SUMMER 2025

FLOORING



## STANDARD "CAPE CANAVERAL" 25oz.

Bedrooms, Bedroom Closets, Den, and Other Secondary Rooms



[ ]  
FOLKLORE



[ ]  
FOSSIL



[ ]  
LONDON FOG



[ ]  
MUSHROOM



[ ]  
NATURE TRAIL



[ ]  
NUTRIA



[ ]  
POTTERY



[ ]  
SILVERSMITH



[ ]  
SUNRISE

## OPTIONAL "TRUE SPIRIT" 39oz.

Bedrooms, Bedroom Closets, Den, and Other Secondary Rooms



[ ]  
LADY LIBERTY



[ ]  
CONCRETE



[ ]  
CITY SPACE



[ ]  
TRUFFLE



[ ]  
COTTAGE



## STANDARD RESOLVE LUXURY VINYL PLANK



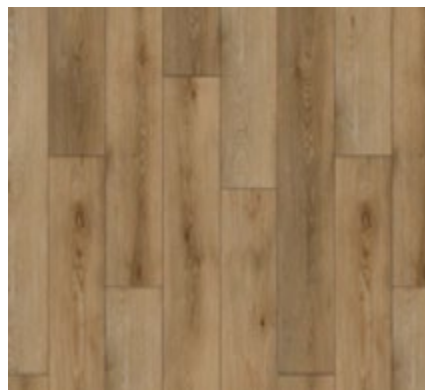
[ ] BEAR



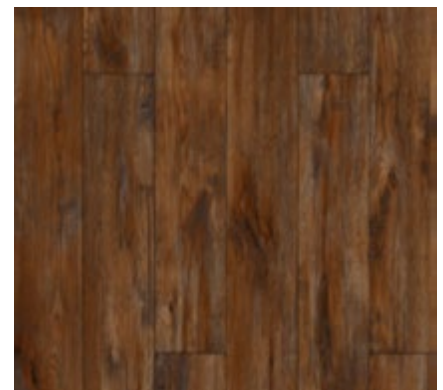
[ ] ESCAPE II



[ ] FAWN

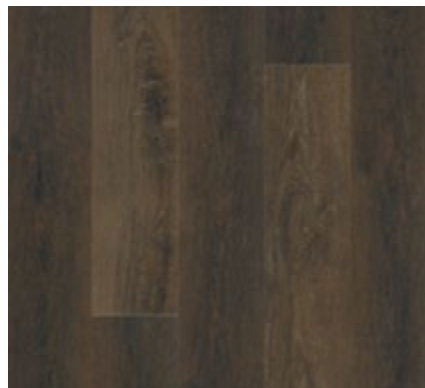


[ ] VOLT

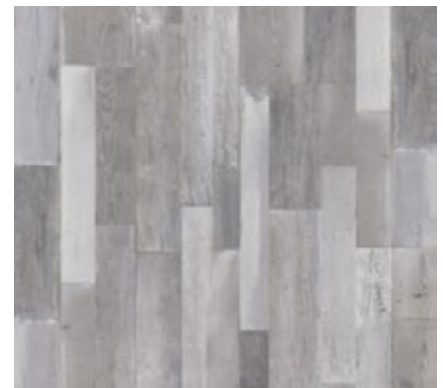


[ ] WHISKEY BARREL

## OPTIONAL MSI CYRUS LUXURY VINYL PLANK



[ ] BARREL



[ ] WOBURN ABBEY

### FLOORING

- [ ] **STANDARD:** Luxury Vinyl Common Areas + Carpet [ ] **OPTION II:** Laminate + Carpet  
 [ ] **OPTION I:** Luxury Vinyl Entire Home [ ] **OPTION III:** Laminate Entire House  
 [ ] **OTHER:** \_\_\_\_\_



# LAMINATE PLANK

BY MOHAWK INDUSTRIES, INC.

NATIONWIDE  
SERIES



## OPTIONAL REVWOOD LAMINATE PLANK



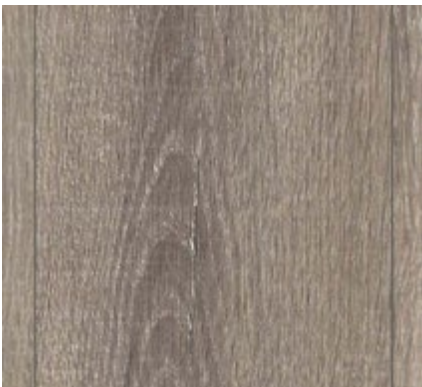
☐ ASHLAR OAK



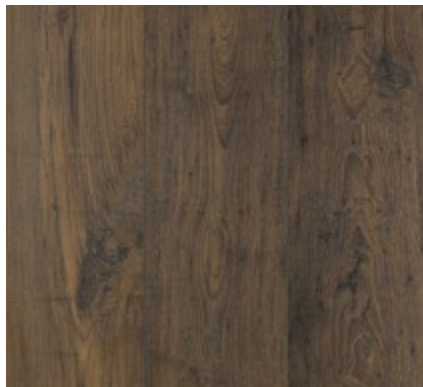
☐ CEDAR CHESTNUT



☐ DOESKIN CHESTNUT



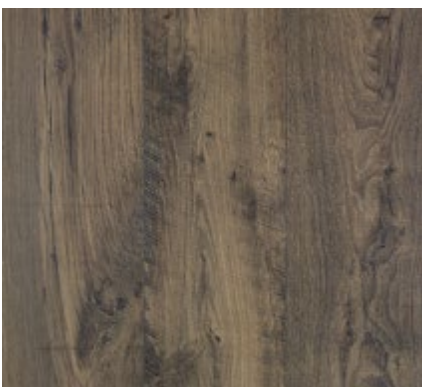
☐ DRIFTWOOD OAK



☐ EASTERN CHESTNUT



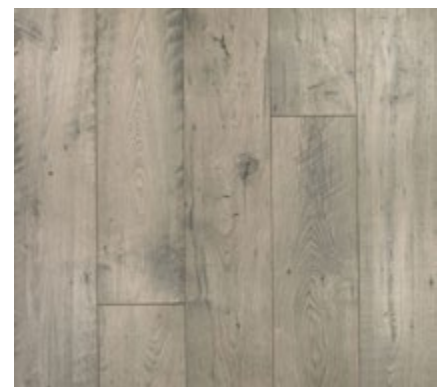
☐ FAWN CHESTNUT



☐ KNOTTED CHESTNUT



☐ SANDCASTLE OAK



☐ SILVERSTONE CHESTNUT

### FLOORING

- ☐ **STANDARD:** Luxury Vinyl Common Areas + Carpet    ☐ **OPTION II:** Laminate + Carpet  
☐ **OPTION I:** Luxury Vinyl Entire Home    ☐ **OPTION III:** Laminate Entire House  
☐ **OTHER:** \_\_\_\_\_

PICTURES ARE FOR REPRESENTATION ONLY – REFER TO SAMPLES FOR ACTUAL COLORS

SPRING/SUMMER 2025

# EXTERIOR

YOUR GUIDE TO

*exterior  
styling*



*Farmhouse I Floor Plan*

**NATIONWIDE**  
SERIES



# EXTERIOR GALLERY

MODERN FARMHOUSE EXTERIORS ARE AVAILABLE  
FOR EVERY FLOOR PLAN WE BUILD

NATIONWIDE  
SERIES



*Garland*



*Farmhouse II*



*Chatham I*



*Sparta Cape Alternate*

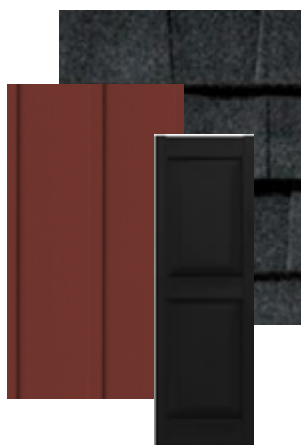


*Southampton*



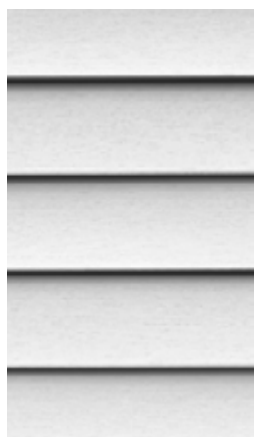
*Whitfield*



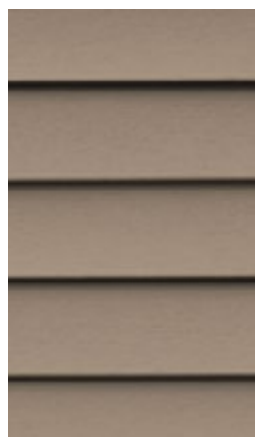


## STANDARD MARKET SQUARE SMART STYLES

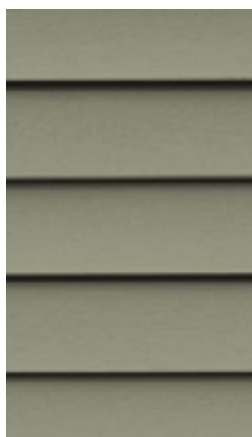
Double 5" Straight Lap



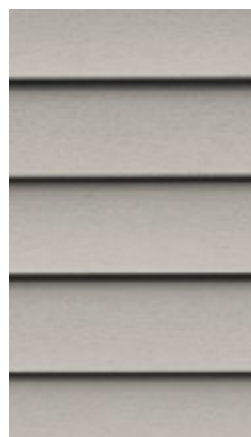
[ ]  
ASPEN WHITE



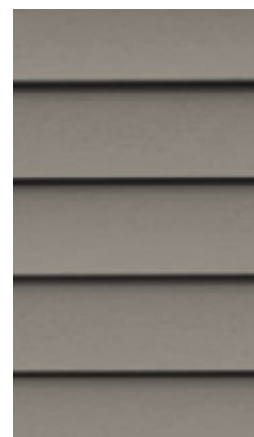
[ ]  
CLAY



[ ]  
CYPRESS



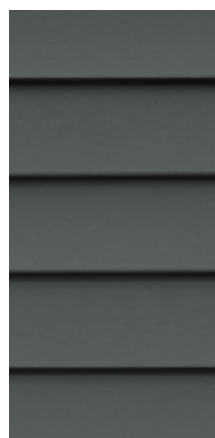
[ ]  
DRIFTWOOD



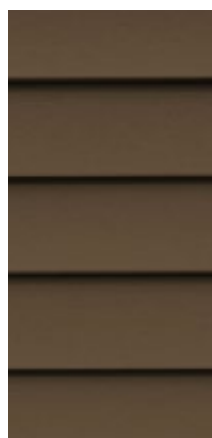
[ ]  
GREYSTONE

## OPTIONAL MARKET SQUARE SMART STYLES

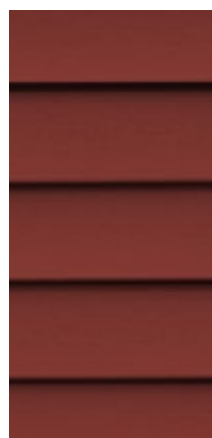
Double 4" Straight Lap



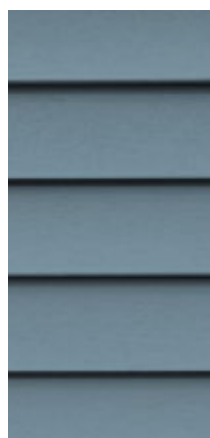
[ ]  
CARBON  
PREMIUM



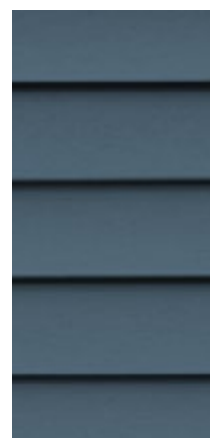
[ ]  
ESPRESSO  
EXPRESSIONS



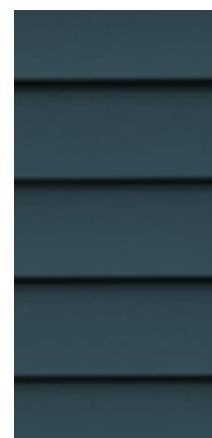
[ ]  
LIGHTHOUSE RED  
EXPRESSIONS



[ ]  
POLARIS  
PREMIUM



[ ]  
REGATTA  
EXPRESSIONS



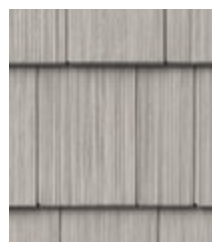
[ ]  
SLATE  
EXPRESSIONS



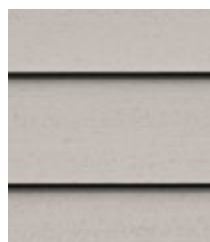
[ ]  
BOARD & BATTEN  
7"



[ ]  
BOARD & BATTEN  
10" SOLID CORE



[ ]  
CEDAR SHAKE



[ ]  
DOUBLE 7" LAP  
SOLID CORE



AVAILABLE  
IN ALL  
COLORS  
ABOVE





## STANDARD ARCHITECTURAL SHINGLES



☐ GEORGETOWN GRAY

☐ MOIRE BLACK

☐ SILVER BIRCH

☐ WEATHERED WOOD

## OPTIONAL SHUTTERS

15" Vinyl Raised Panel



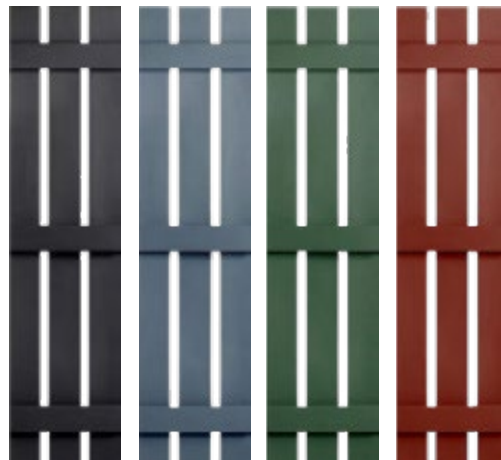
☐ BLACK

☐ BLUE

☐ GREEN

☐ RED

12" Vinyl Open B&B



☐ BLACK

☐ BLUE

☐ GREEN

☐ RED

15" Wood B&B



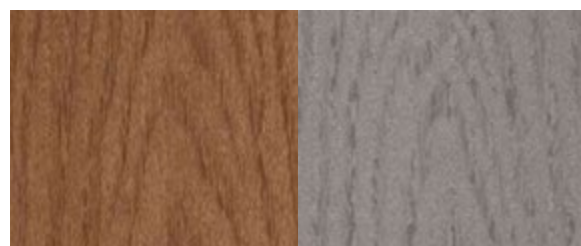
☐ WOOD  
☐ STAINED (SHOWN)  
☐ UNFINISHED

## FACTORY BUILT PORCHES



**STANDARD**  
White Vinyl Railing  
and Pickets with  
Wrapped  
6" x 6" Posts.

☐ 5/4" x 6" LUMBER  
STANDARD  
TREATED WOOD DECKING



☐ SADDLE  
OPTIONAL  
COMPOSITE DECKING

☐ PEBBLE GRAY  
OPTIONAL  
COMPOSITE DECKING



# DORMERS

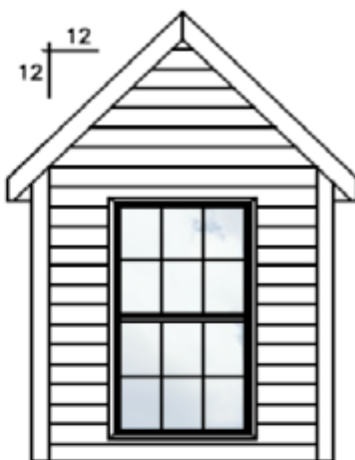
## OPTIONAL CAPE DORMERS

NATIONWIDE  
SERIES



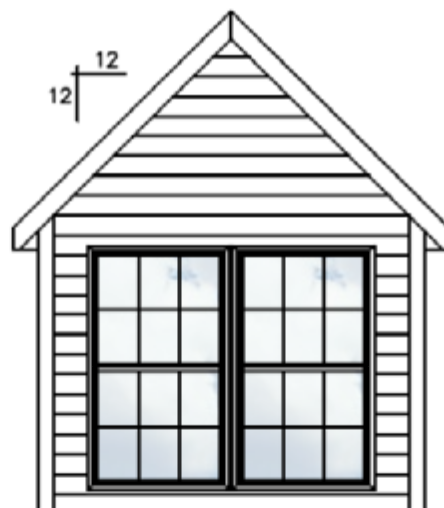
**4' Gable**

Available on 9/12 or 12/12



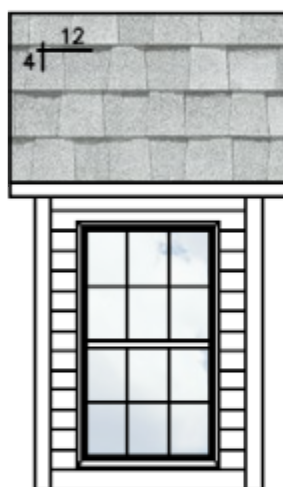
**6' Gable**

Available on 12/12



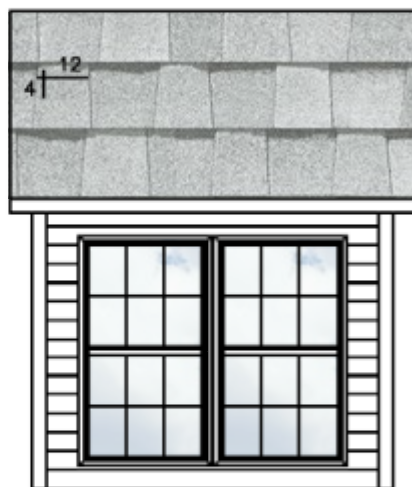
**8' Gable**

Available on 12/12



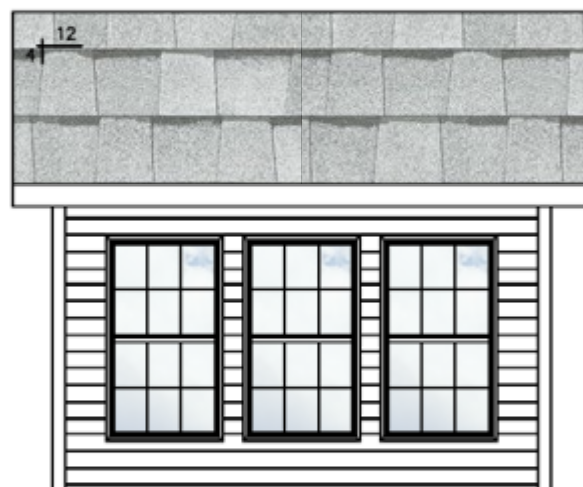
**4' Shed**

Available on 12/12



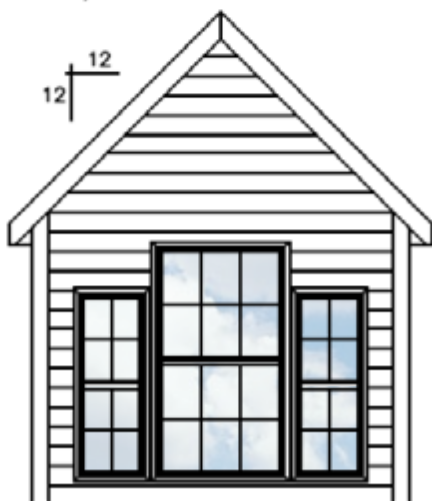
**8' Shed**

Available on 12/12



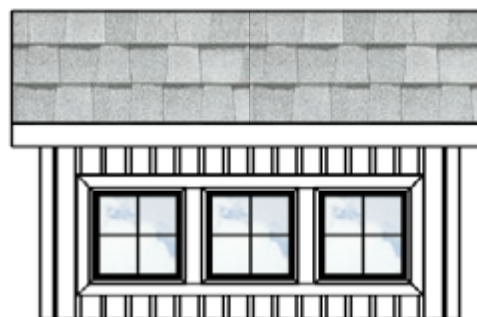
**12' Shed**

Available on 12/12



**8' Palladian Gable**

Available on 12/12



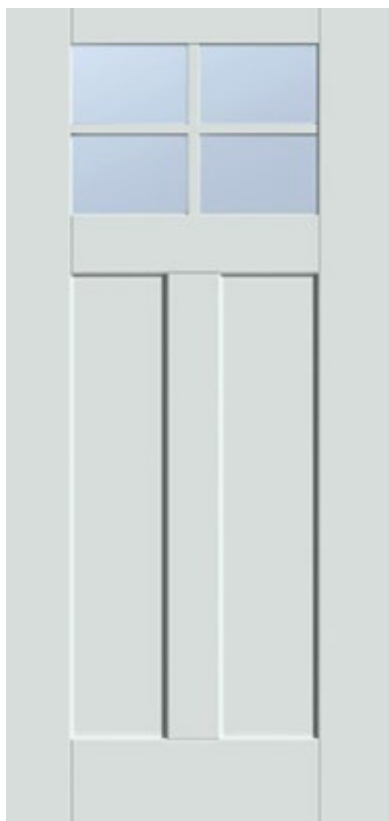
**10' Short Shed**

Available on 12/12



## STANDARD FRONT DOORS

Smooth Fiberglass Entry Doors – Primed (Including Paintable Grids)



[ ] **CRAFTSMAN**  
4-Lite S4814

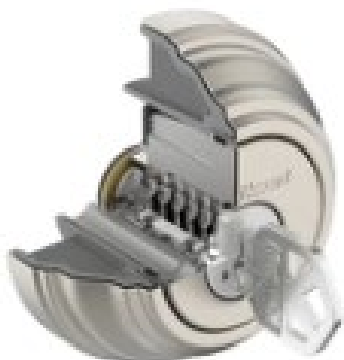


[ ] **1/2 GLASS**  
4-Lite S262



[ ] **3/4 GLASS**  
4-Lite S2106

## STANDARD REAR DOOR & HOME LOCK-SET



PICK RESISTANT



BUMP PROOF



RE-KEY  
TECHNOLOGY



**SMARTKEY**  
**SECURITY™**

**Kwikset**

# EXTERIOR DOORS

OPTIONAL BY THERMATRU

NATIONWIDE  
SERIES

THERMA<sup>®</sup>TRU  
DOORS

## OPTIONAL ENTRY DOORS

Primed Smooth Fiberglass (Including Paintable Grids)



[ ] **2-Panel**  
20-Min S220



[ ] **1/2 GLASS**  
No Grids S206



[ ] **3/4 GLASS**  
No Grids S80



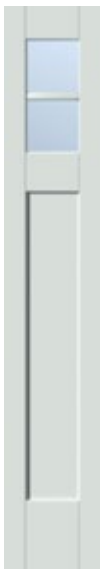
[ ] **FULL GLASS**  
No Grids S118



[ ] **FULL GLASS**  
4-Lite S1209

## OPTIONAL SMOOTH FIBERGLASS SIDELIGHTS

Primed (Including Paintable Grids)



[ ] **CRAFTSMAN**  
S4812 SL



[ ] **1/2 GLASS**  
No Grids  
S751 SL



[ ] **3/4 GLASS**  
No Grids  
S751 SL



[ ] **3/4 GLASS**  
2-Lite  
S2106



[ ] **FULL GLASS**  
No Grids  
S751 SL



[ ] **FULL GLASS**  
2-Lite  
S1209 SL



### SWINGING PATIO DOORS

Primed Smooth Fiberglass (Including Paintable Grids)



☐ **3/4 GLASS PATIO**  
No Grids S80



☐ **3/4 GLASS PATIO**  
4-Lite S2106



☐ **FULL GLASS PATIO**  
No Grids S118



☐ **FULL GLASS PATIO**  
4-Lite S1209

### SLIDING PATIO DOORS

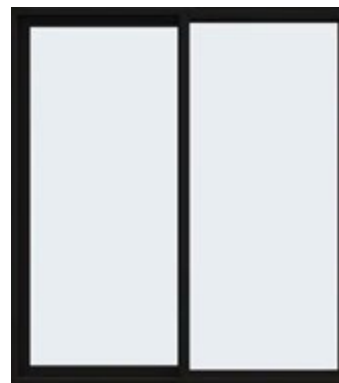
Vinyl



☐ **WHITE SLIDER**  
No Grids 214

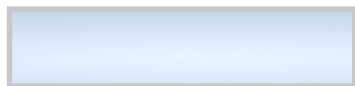


☐ **WEST WINDOW  
GRID SLIDER**  
215



☐ **KINRO  
BLACK SLIDER**  
No Grids 214

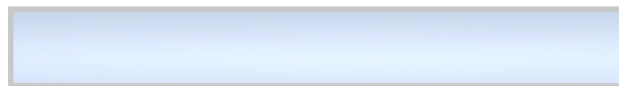
### EXTERIOR DOOR TRANSOMS



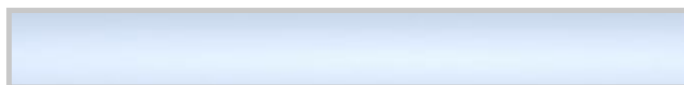
☐ **3/0 1-LITE  
TRANSOM**



☐ **3/0 x 1/0 1-LITE  
TRANSOM**



☐ **1/0 x 3/0 x 1/0 1-LITE  
TRANSOM**



☐ **PATIO DOOR TRANSOM**  
Not Available in Black\*

# WINDOWS

BY KINRO & WEST WINDOW

NATIONWIDE  
SERIES

## STANDARD WINDOW

White Vinyl: Single Hung with Low-E Glass



[ ] 4/1 GRID



[ ] 4/1 GRID

### BLACK OPTION:



[ ] 4/1 GRID  
OPTIONAL



[ ] 4/1 GRID  
OPTIONAL

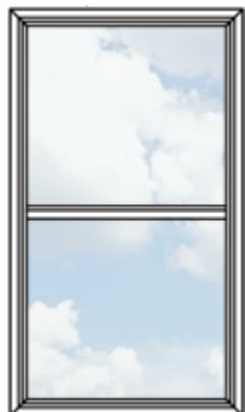
## OPTIONAL WINDOW

White Vinyl: Single Hung with Low-E Glass

(Double Hung and Alternate Grid Patterns Optional)



[ ] 6/6  
GRID



[ ] 1/1  
GRID



[ ] PRAIRIE  
GRID



[ ] HALF PRAIRIE  
GRID



[ ] 3/1  
GRID

SPRING/SUMMER 2025

# INTERIOR

*Engineered & Custom-built by Nationwide*



Whitfield Floor Plan

**NATIONWIDE**  
— MILLWORK —



# FIREPLACES

NATIONWIDE DESIGNED & BUILT NICHES

NATIONWIDE  
— MILLWORK —

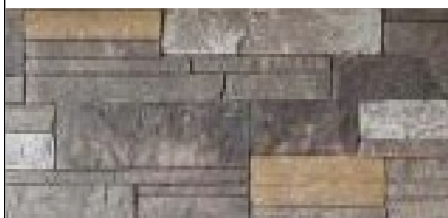
## TRADITIONAL & MODERN OPTIONS



**42" MONESSEN INSERT:**

- [ ] LIQUID PROPANE  
[ ] NATURAL GAS

**STONE SURROUND:**



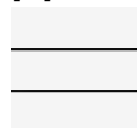
### **60" MODERN INSERTS:**

FULLY RECESSED INTO THE WALL

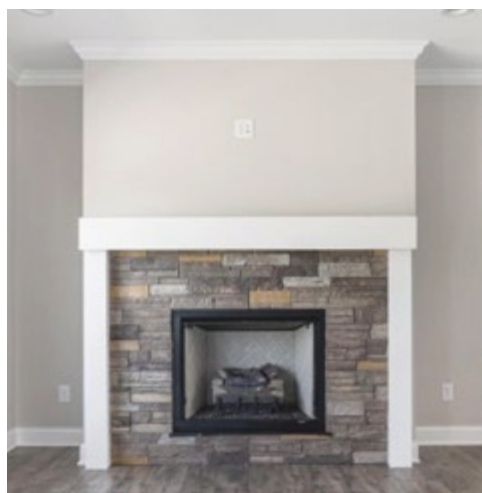
- [ ] **MODERN ALLUSION FIREPLACE**  
ELECTRIC INSERT WITH 4 FLAME COLORS  
DECORATIVE FIRE CRYSTAL IN BASE

**SHIPLAP SURROUND**

- [ ] **CHARCOAL** [ ] **WHITE**



- [ ] **MODERN MARVEL FIREPLACE**  
GAS INSERT WITH STANDARD FLAME  
NO DECORATIVE FIRE CRYSTAL  
**DRYWALL SURROUND**



[ ] **VERSETTA STONE & DRYWALL**  
(WHITE WOOD BORDER SHOWN)



[ ] **VERSETTA STONE & SHIPLAP**  
(WHITE WOOD BORDER SHOWN)



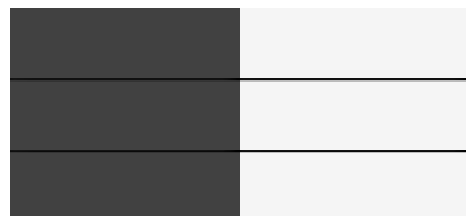
[ ] **FULL VERSETTA STONE**  
(BROWN WOOD BORDER SHOWN)

## WOOD BORDER



- [ ] **CHARCOAL** [ ] **BROWN** [ ] **NATURAL** [ ] **WHITE**

## SHIPLAP



- [ ] **CHARCOAL** [ ] **WHITE**

PICTURES ARE FOR REPRESENTATION ONLY – REFER TO SAMPLES FOR ACTUAL COLORS



## OPTIONAL FEATURE WALLS



### SHIPLAP

☐ CHARCOAL    ☐ WHITE

### SHELVING

☐ WHITE    ☐ CHARCOAL  
☐ BROWN STAIN    ☐ NATURAL STAIN

### LIGHTING

☐ SCONE SET: \_\_\_\_\_

*See lighting section for wall sconce options\**

### BASE

☐ FIREPLACE & MANTLE

**-OR-**

☐ CABINET WITH WHITE  
SOLID SURFACE COUNTERTOP

# FARMHOUSE

OPTIONAL BEAMS, SHIPLAP, & BARN DOORS

NATIONWIDE  
— MILLWORK —

## CEILING BEAMS & AVAILABLE STAINS



☐ BROWN STAIN



☐ CHARCOAL STAIN

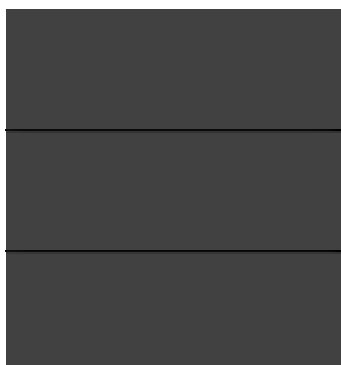


☐ NATURAL STAIN

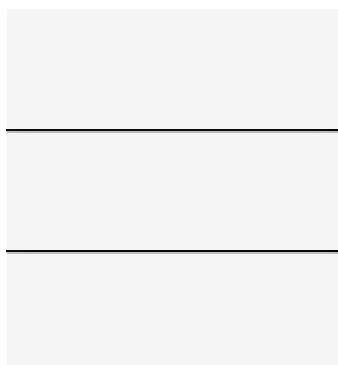


☐ WHITE PAINT

## SHIPLAP (SMOOTH FINISH)



☐ CHARCOAL



☐ WHITE

LOCATION OF BEAMS:

---

LOCATION OF SHIPLAP:

---

LOCATION OF BARN DOOR(S):

---

## BARN DOORS



☐ WHITE



☐ CHARCOAL



☐ GLASS



☐ BI-FOLD  
CHARCOAL



☐ BI-FOLD  
WHITE

PICTURES ARE FOR REPRESENTATION ONLY – REFER TO SAMPLES FOR ACTUAL COLORS



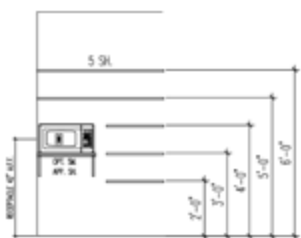
## OPTIONAL KITCHEN & BEDROOM STORAGE

### PANTRIES



☐ **OPTIONAL HIDDEN PANTRY**  
WALK-IN PANTRY HIDDEN BEHIND  
FULL-HEIGHT CABINET DOORS

*Check availability in selected model\**



☐ **STANDARD WIRE SHELVING**

☐ **OPTIONAL WOOD SHELVING**

☐ **OPTIONAL APPLIANCE SHELF**



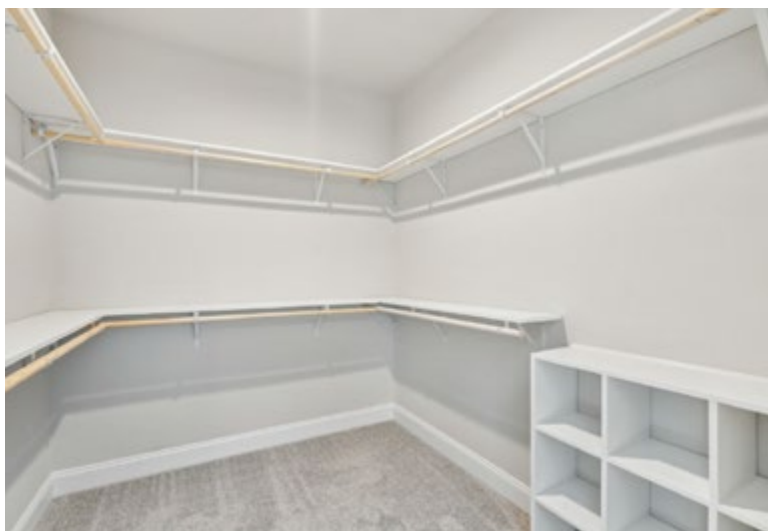
### CLOSETS



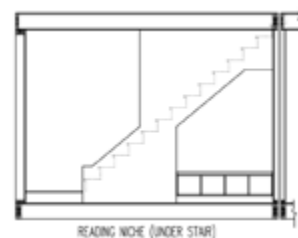
☐ **STANDARD WIRE SHELVING**

☐ **OPTIONAL WOOD SHELVING**

*\*with continuous slide wood rod*



### OPTIONAL RECESSED NICHES



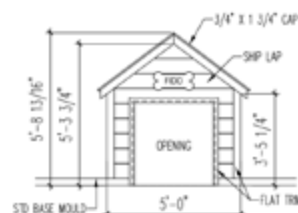
[ ] **READING NICHE**  
BENCH & STORAGE

*ILO closet under stairway\**



[ ] **STUDY NICHE**  
DESK & STORAGE

*Available under stairway\*  
ILO closet under stairway\**



[ ] **PUPPY NICHE**  
SHIPLAP DOGHOUSE

*Available under stairway or recessed in a closet\**

## INTERIOR DOORS

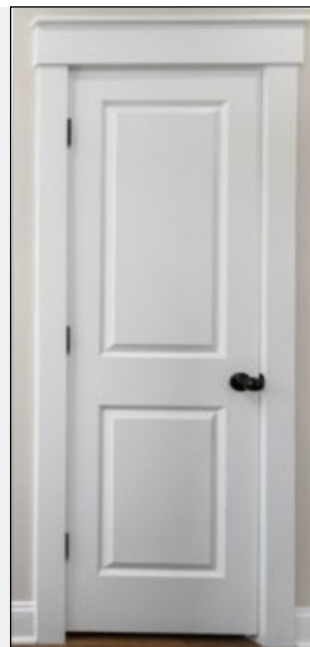


☐ **STANDARD**  
2-PANEL



☐ **OPTIONAL**  
5-PANEL RIVERSIDE

### BARN DOOR OPTIONS:



☐ **OPTIONAL CRAFTSMAN TRIM PACKAGE**

INCLUDES:  
5 1/4" SPEED BASE  
4 1/4" CROWN

## INTERIOR DOOR HARDWARE



☐ **STANDARD**  
NICKEL LEVER



☐ **OPTIONAL**  
MATTE BLACK KNOB



☐ **OPTIONAL**  
MATTE BLACK LEVER

*\*INCLUDED WITH OPTIONAL  
BLACK AND FARMHOUSE  
PACKAGES*

## BASEBOARD, CASING, & CROWN



4 1/4" Crown



OPTIONAL  
6 1/4" Crown \*MDF



3 1/4" Base



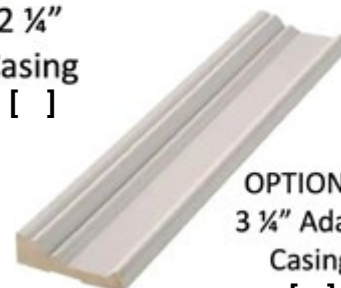
OPTIONAL  
5 1/4" Speed Base

☐ **STANDARD**  
PINE CROWN  
PINE BASEBOARD

☐ **OPTIONAL (LARGE)**  
MDF CROWN  
PINE BASEBOARD



2 1/4"  
Casing  
☐



OPTIONAL  
3 1/4" Adams  
Casing  
☐



**CLICK IMAGES TO LAUNCH**



**FARMHOUSE I**



**FARMHOUSE II**



**SOUTHAMPTON**



**SPARTA CAPE ALTERNATE**



**HEARTLAND I**



SPRING/SUMMER 2025

# VALUE ADDED

YOUR GO TO FOR  
*superior  
building*  
SINCE 1959



*Vertically integrated with factory delivery, factory set-up, and factory service.*

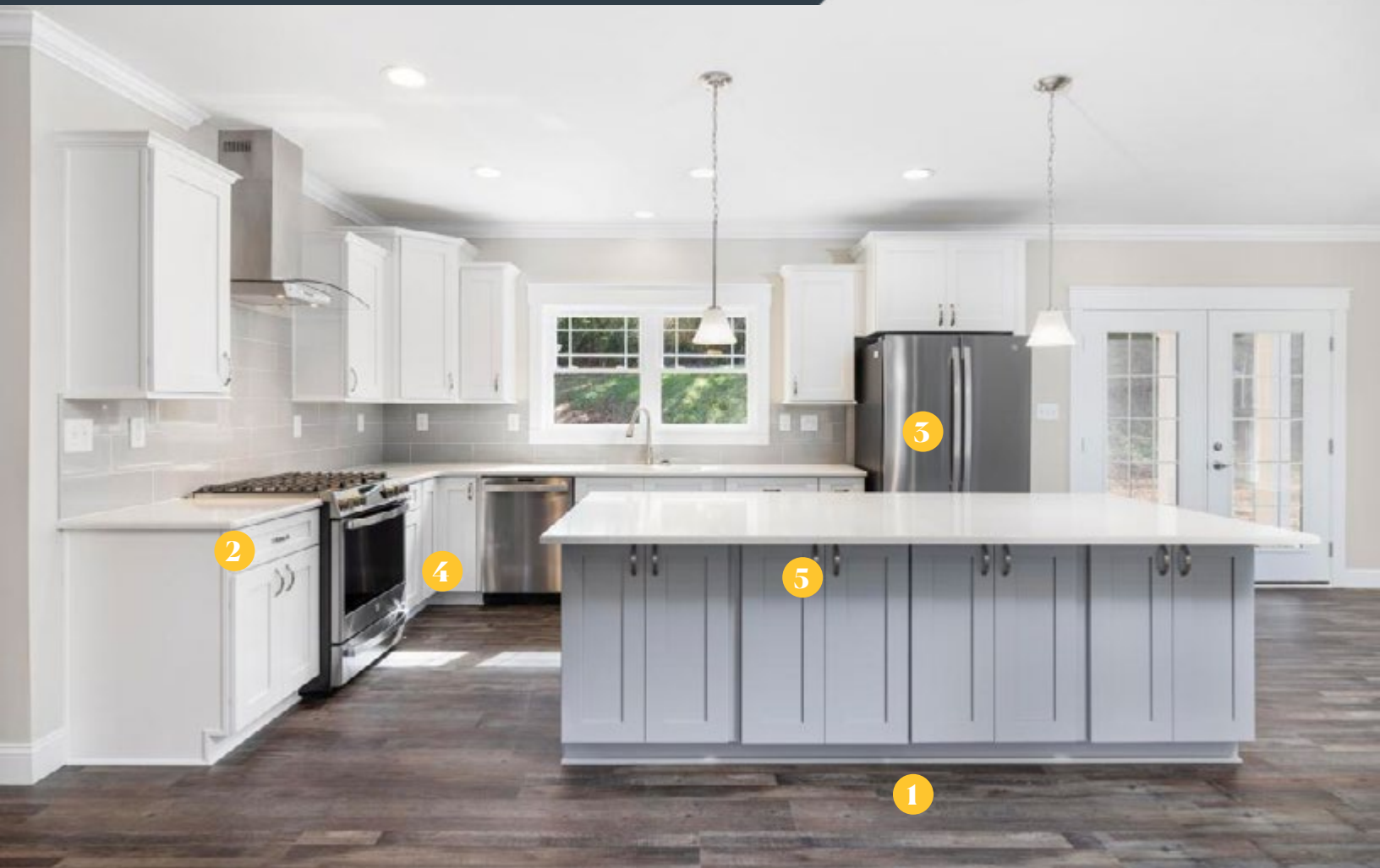
**NATIONWIDE**  
SERIES



# BUILT-IN VALUE

A NATIONWIDE STANDARD

NATIONWIDE  
SERIES



## KITCHEN DESIGN



- 1 ADDITIONAL ISLAND SUPPORT**  
2x10" FLOOR JOISTS ARE DOUBLED UNDER ISLAND TO PREVENT DEFLECTION



- 2 DOVETAIL CABINET DRAWERS**  
WITH UNDER-MOUNT FULL EXTENSION SOFT-CLOSE GLIDES



- 3 RECESSED ICE MAKER BOX**  
WITH WATER SHUTOFF



- 4 LAZY SUSAN CORNER CABINET**  
NO MORE CLUTTERED CORNERS!  
*Standard in kitchens with corner cabinets\**



- 5 POTS & PANS 30" OR 36" DRAWER**  
ONE DRAWER STACK IN ISLAND OR PENINSULA KITCHENS

PICTURES ARE FOR REPRESENTATION ONLY – REFER TO SAMPLES FOR ACTUAL COLORS



## BATHROOM DESIGN



- 1 ADDITIONAL SHOWER SUPPORT**  
2x10" FLOOR JOISTS ARE DOUBLED  
UNDER 4X6' AND 4X8' SHOWERS
- 2 ELONGATED TOILET**  
INCREASED COMFORT AND SURFACE  
FOR SEATING
- 3 NATIONWIDE BUILT MIRRORS**  
STANDARD CUSTOM MIRRORS  
AVAILABLE IN VARIOUS FINISHES
- 4 SMART BATH EXHAUST FAN**  
PROGRAMMABLE OR AUTOMATIC  
VENTILATION (SWITCH IN BATH #1)
- 5 NATIONWIDE BUILT LINEN**  
OPEN CONCEPT SHELVING FOR BATH  
LINENS

STANDARD VALUE ADDED CUSTOM BUILT-INS ARE TO EACH PLAN WHEN SPACE  
ALLOWS. PLEASE SEE FLOOR PLAN FOR FURTHER DETAILS.

## LAUNDRY & UTILITY DESIGN



- 1 NATIONWIDE BUILT LAUNDRY**  
OPEN CONCEPT SHELVING FOR  
LAUNDRY ITEMS
- 2 RECESSED DRYER VENT**  
PREVENTS CRUSHED DRYER HOSE AND  
ALLOWS MORE FLOOR SPACE
- 3 NATIONWIDE BUILT CUBBY**  
OPEN CONCEPT SHOE STORAGE  
BENCH AND COAT RACK

STANDARD VALUE ADDED CUSTOM BUILT-INS ARE TO EACH PLAN WHEN SPACE  
ALLOWS. PLEASE SEE FLOOR PLAN FOR FURTHER DETAILS.

# BUILT-IN VALUE

A NATIONWIDE STANDARD

NATIONWIDE  
SERIES

## ADDITIONAL VALUE IN YOUR HOME



**7/12 ATTIC STORAGE RAFTERS  
(NOT SCISSOR TRUSSES)**



**TITAN HOUSE WRAP SYSTEM, ROOF  
UNDERLAYMENT, FLASHING, & SEAM TAPE**



**INTERIOR WALL COLOR:  
AGREEABLE GRAY (SW7029)**



**LED NIGHTLIGHT RECEPTACLE COVERS FOR  
HALLWAYS 6FT OR GREATER**



**PVC TRIM BOARDS WITH  
BOARD & BATTEN SIDING**



**PRIMARY BEDROOM  
CLOSET CUBBY**



**12-GAUGE WIRING WITH  
20 AMP BREAKERS**



**USB-C RECEPTACLE**

PICTURES ARE FOR REPRESENTATION ONLY – REFER TO SAMPLES FOR ACTUAL COLORS